

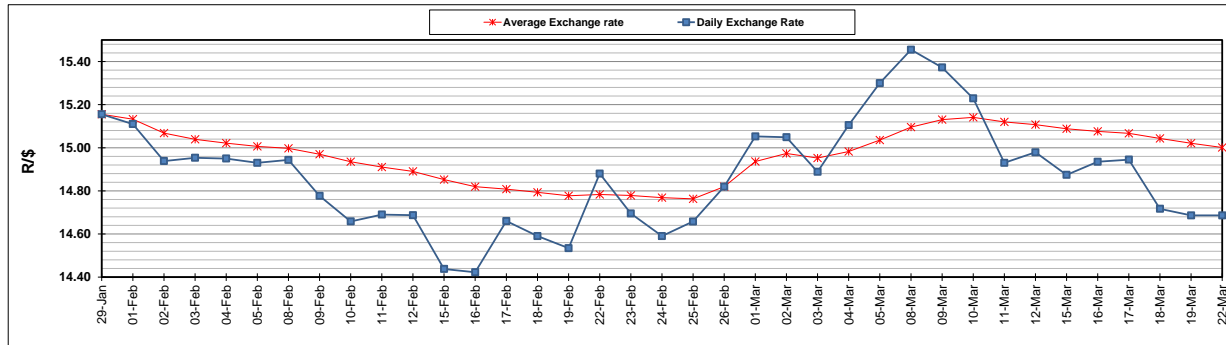
	PETROL 95 ULP	PETROL 93 ULP & LRP	DIESEL 0.05%	DIESEL 0.005%	ILL. PAR.
GAUTENG PUMP PRICE (SA c/l) AS FROM 03/03/2021	1,632.000	1,615.000	-	-	-
WHOLESALE PRICE (SA c/l) AS FROM 03/03/2021	-	-	1,412.420	1,416.820	845.688
SINGLE NATIONAL MAXIMUM RETAIL PRICE	-	-	-	-	1,071.000
BASIC FUEL PRICE - 22/03/2021 (SA c/l)	701.399	687.248	656.597	658.774	634.946
PRESS RELEASE CONTRIBUTION TO BFP 03/03/2021 - 22/03/2021 (SA c/l)	665.170	658.170	653.630	658.030	633.128
UNIT OVER/(UNDER) RECOVERY - 22/03/2021 (SA c/l)	(36.229)	(29.078)	(2.967)	(0.744)	(1.818)
AVERAGE BASIC FUEL PRICE 26/02/2021 - 22/03/2021	735.050	724.043	696.108	698.858	673.608
AVERAGE UNIT OVER/(UNDER) RECOVERY 26/02/2021 - 22/03/2021	(81.350)	(77.343)	(52.008)	(50.710)	(48.775)

ANALYSIS MOVEMENT OF AVERAGE OVER/(UNDER) RECOVERY

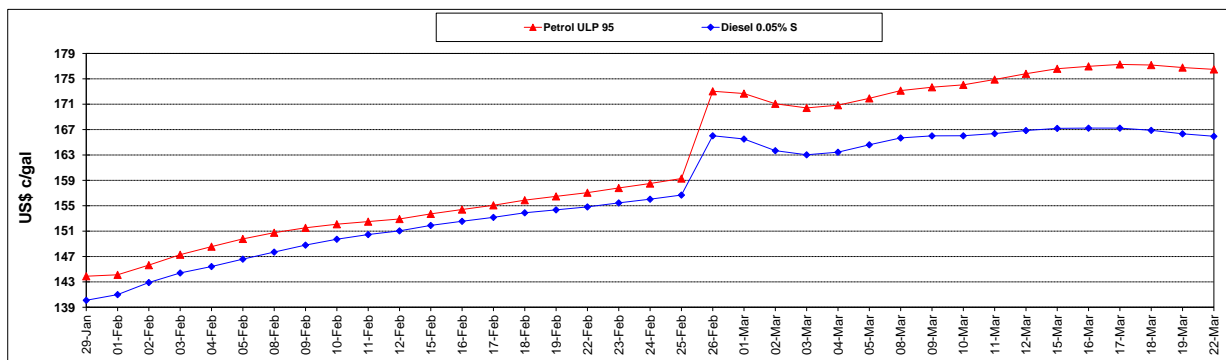
	PETROL 95	PETROL 93	DIESEL 0.05%	DIESEL 0.005%	ILL. PAR.
- MOVEMENT IN INTERNATIONAL PRODUCT PRICES	(69.675)	(65.842)	(40.949)	(39.609)	(38.074)
- MOVEMENT IN EXCHANGE RATE	(11.676)	(11.502)	(11.058)	(11.101)	(10.700)
AVERAGE UNIT OVER/(UNDER) RECOVERY 26/02/2021 - 22/03/2021	(81.350)	(77.343)	(52.008)	(50.710)	(48.775)

R/\$ EXCHANGE RATE - (R/\$14.6863 - 22/03/2021)

EXCHANGE RATE USED IN BASIC FUEL PRICE



INTERNATIONAL PRODUCT PRICES OF BASKET USED IN BASIC FUEL PRICE



BASIC FUEL PRICE IN SA CENTS PER LITRE

